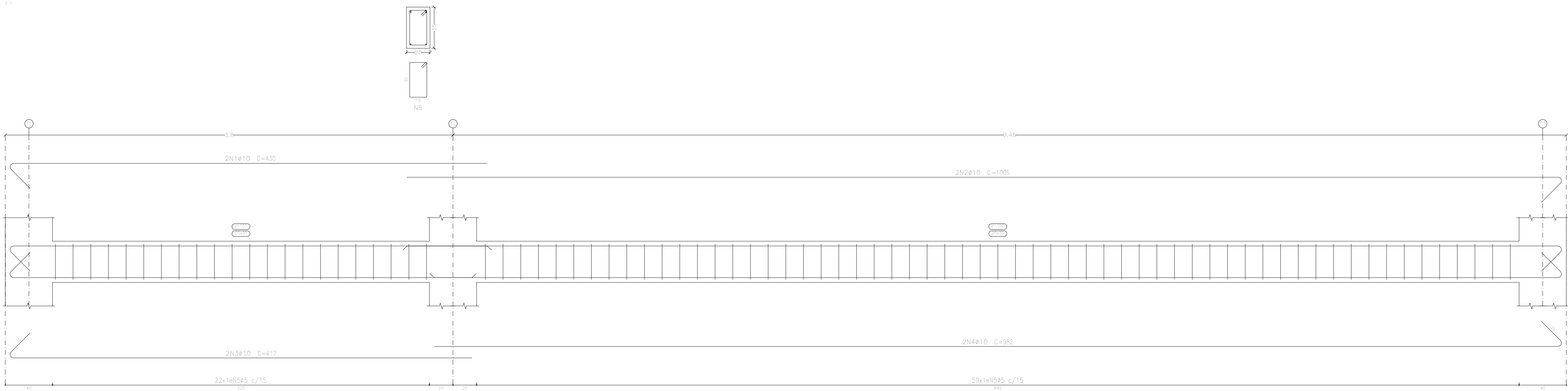
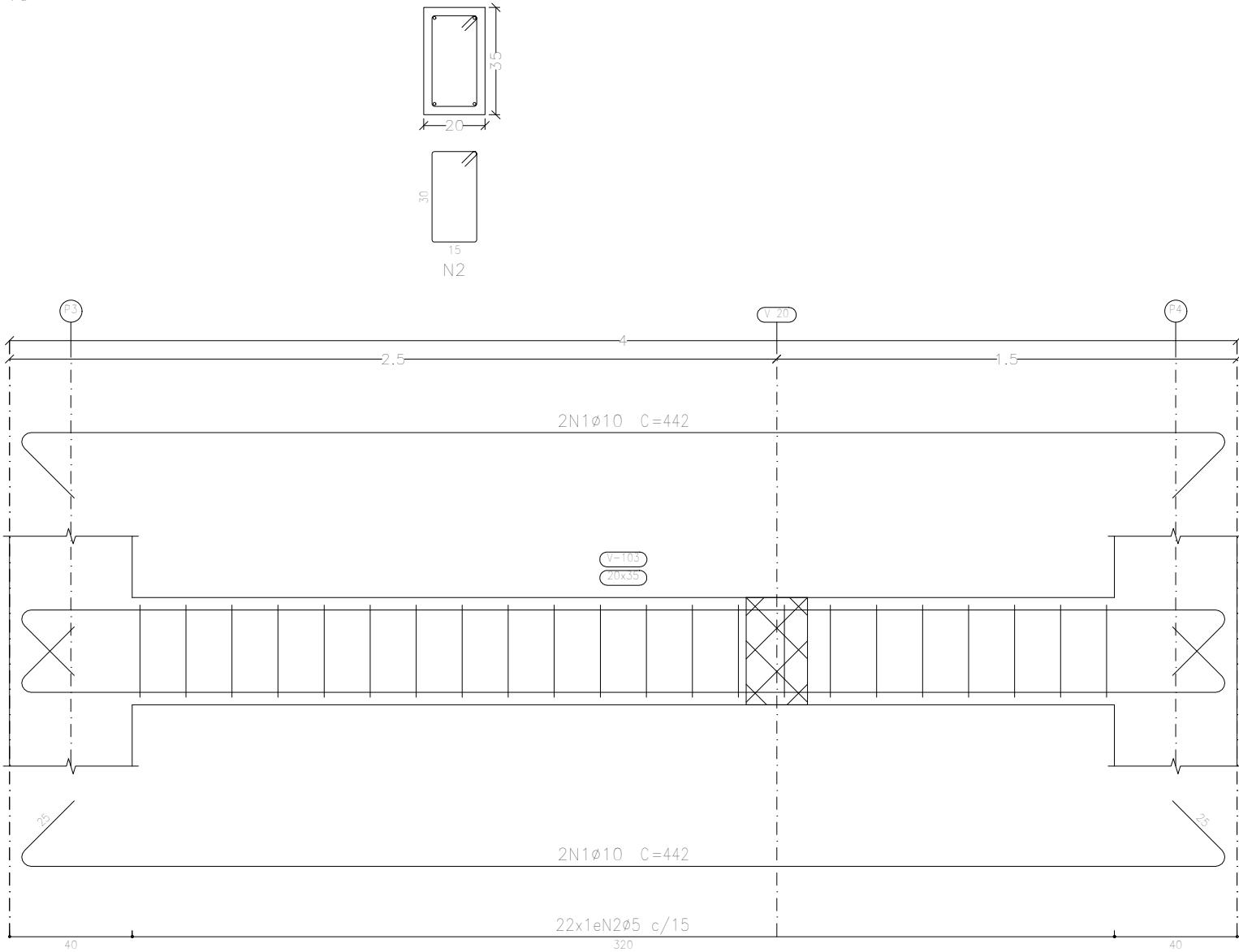


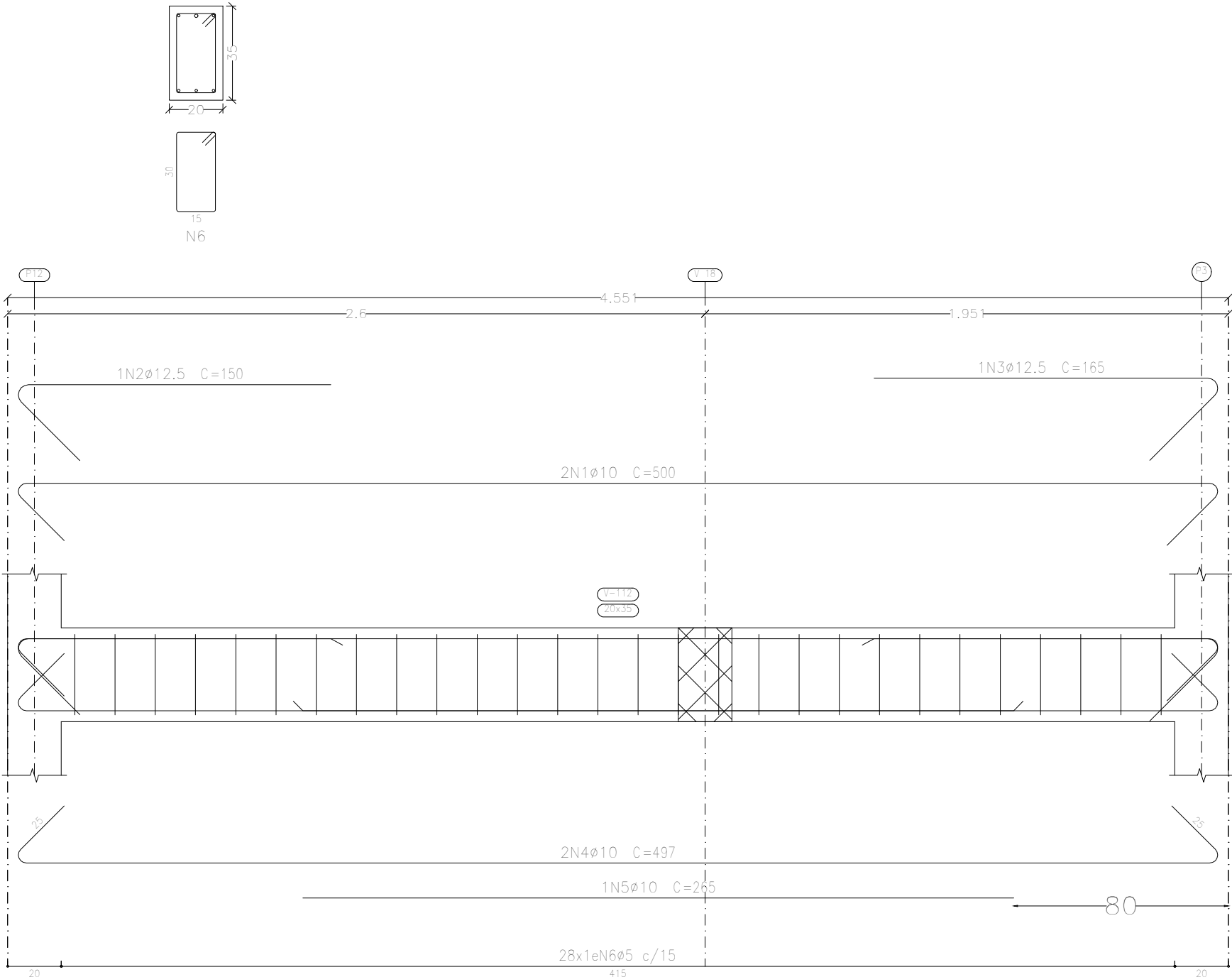
V 1



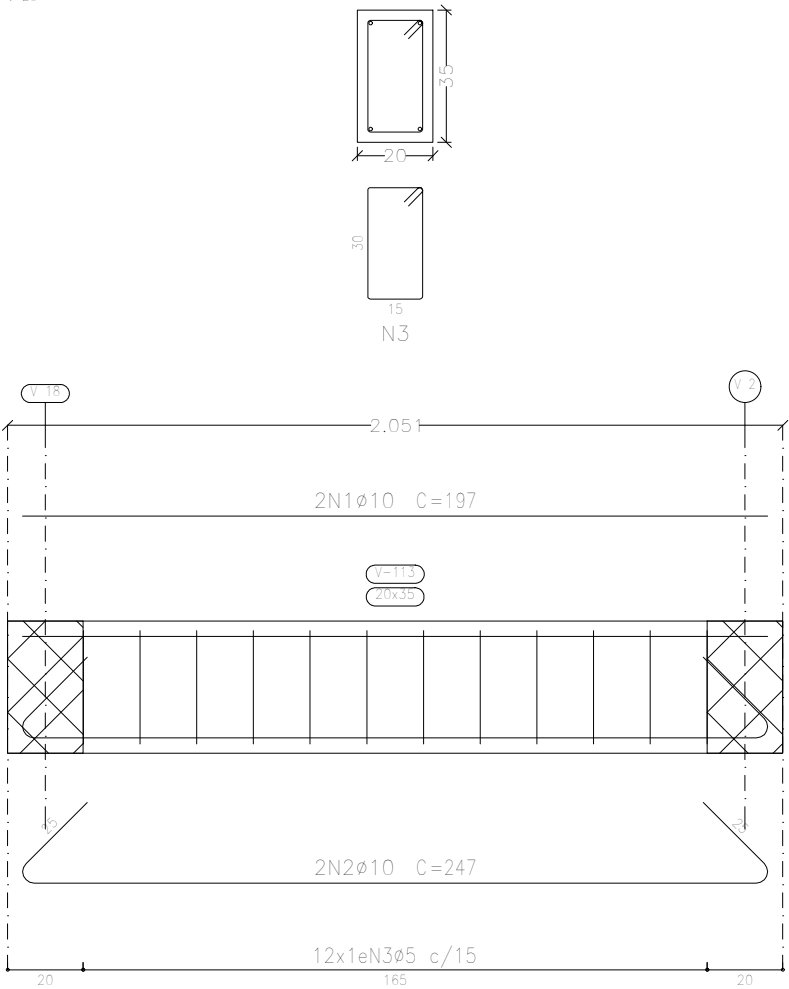
V 2



V 19



V 20



Elemento	Pos.	Diam.	Q.	Esquema (cm)	Comp. (cm)	Total (cm)	CA-50 (kg)	CA-60 (kg)
V 1	1	ø10	2		430	860	5.3	
	2	ø10	2		1005	2010	12.4	
	3	ø10	2		417	834	5.1	
	4	ø10	2		982	1964	12.1	
	5	ø5	81		98	7938		12.5
					Total+10%		38.4	13.8
V 2	1	ø10	4		442	1768	10.9	
	2	ø5	22		98	2156		3.4
				Total+10%		12.0	3.7	
V 19	1	ø10	2		500	1000	6.2	
	2	ø12,5	1		150	150	1.4	
	3	ø12,5	1		165	165	1.6	
	4	ø10	2		497	994	6.1	
	5	ø10	1		265	265	1.6	
	6	ø5	28		98	2744		4.3
				Total+10%		18.6	4.7	
V 20	1	ø10	2		197	394	2.4	
	2	ø10	2		247	494	3.0	
	3	ø5	12		98	1176		1.8
				Total+10%		5.9	2.0	
				ø5:		0.0	24.2	
				ø10:		71.6	0.0	
				ø12,5:		3.3	0.0	
				Total:		74.9	24.2	

Piso 1
Desenho de vigas
Concreto: C25, em geral
Aço das barras: CA-50 e CA-60
Aço dos estribos: CA-50 e CA-60
Escala vigas 1:20
Escala seções 1:20
Escala aberturas 1:20

Portal Expo	Data:
Local:	10/05/2024
Promotor:	Número de desenho:
Portal do Parque de Exposições O. Reck	Escala:
Eduardo Rompanelli Tosetto Engenheiro Civil Número do CREA: 1220503037	Data: 10/05/2024